

# Using C-Map update and weather services over FleetBroadband

Version 1.0  
24 October 2007

[inmarsat.com/fleetbroadband](http://inmarsat.com/fleetbroadband)

Whilst the information has been prepared by Inmarsat in good faith, and all reasonable efforts have been made to ensure its accuracy, Inmarsat makes no warranty or representation as to the accuracy, completeness or fitness for purpose or use of the information. Inmarsat shall not be liable for any loss or damage of any kind, including indirect or consequential loss, arising from use of the information and all warranties and conditions, whether express or implied by statute, common law or otherwise, are hereby excluded to the extent permitted by English law. INMARSAT is a trademark of the International Mobile Satellite Organisation, Inmarsat LOGO is a trademark of Inmarsat (IP) Company Limited. Both trademarks are licensed to Inmarsat Global Limited. © Inmarsat Global Limited 2007. All rights reserved.

# Contents

1	Overview	1
2	Product range	1
	2.1 C-Map update service	1
	2.2 C-MAP WeatherNav	3
3	Typical users	3
4	Key features	3
5	Benefits to FleetBroadband users	3
6	Setting up	4
7	Further details and support	4

# 1 Overview

Jeppesen Marine has developed a number of services that make it possible for navigators to download chart updates, including new editions, and weather forecast data. Previously it was not possible to download new chart editions due to the restrictions of satellite communications. Now, with FleetBroadband, downloading new editions is possible.

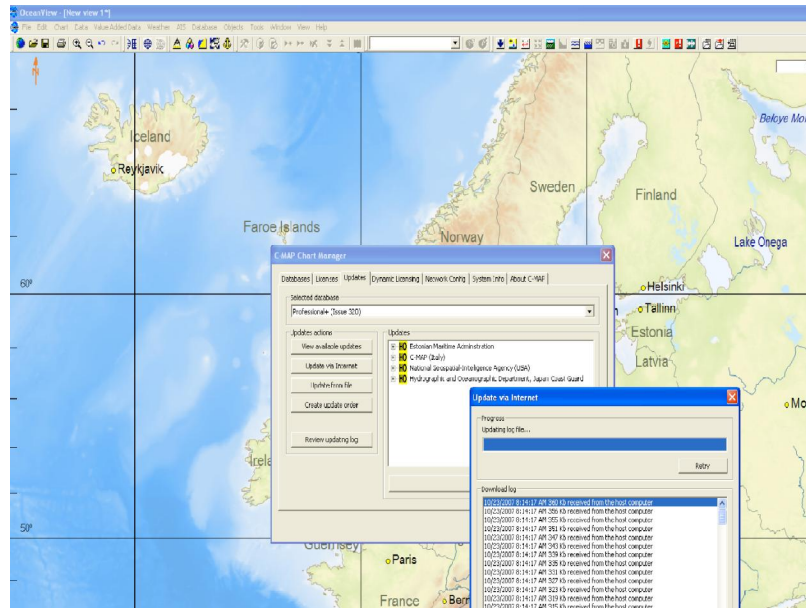
Jeppesen Marine also supply worldwide weather forecast data to shipping. The increased bandwidth of FleetBroadband allows more accurate data to be sent for longer forecast periods.

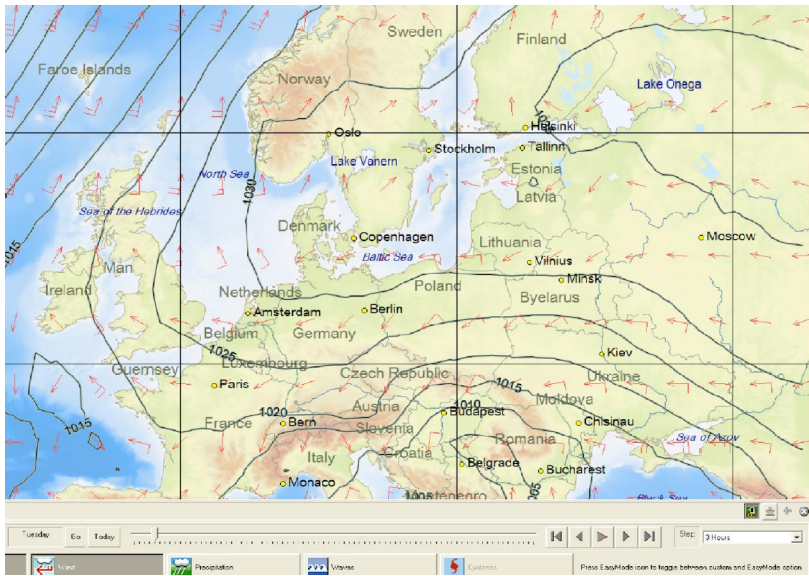
# 2 Product range

## 2.1 C-Map update service

The C-Map update service comprises the following:

- Chart update service for downloading and applying notices to mariners.





- Chart Update Wizard for downloading and applying new editions and notices to mariners.



## 2.2 C-MAP WeatherNav

The C-Map WeatherNav service provides up to 10 day worldwide weather forecasts combined with routing and ship response.

## 3 Typical users

- Professional marine navigators.

## 4 Key features

The C-Map services offer:

- Updates to electronic charts on a daily basis.
- The possibility of creating completely new databases.
- Worldwide weather services for routing and ships response.

## 5 Benefits to FleetBroadband users

C-Map services ensure that both chart updates and weather forecasts are available whenever and wherever you need them over FleetBroadband.

## 6 Setting up

All C-Map software is installed on a planning station or on the ECDIS (via the OEM). There are various methods of setting up the software dependent upon the communications method being used. Please refer to the user manuals. No equipment is installed by Jeppesen Marine.

## 7 Further details and support

### **Inmarsat contact:**

Customer\_care@inmarsat.com

### **Jeppesen Marine contact:**

Contact Name: Paul Elgar  
Jeppesen Norway AS  
Hovlandsveien 52  
4379 Egersund  
Norway

Tel: +47 51464700  
Fax: +47 51464700  
Email: [pselgar@c-map.no](mailto:pselgar@c-map.no)  
[www.c-map.no](http://www.c-map.no)